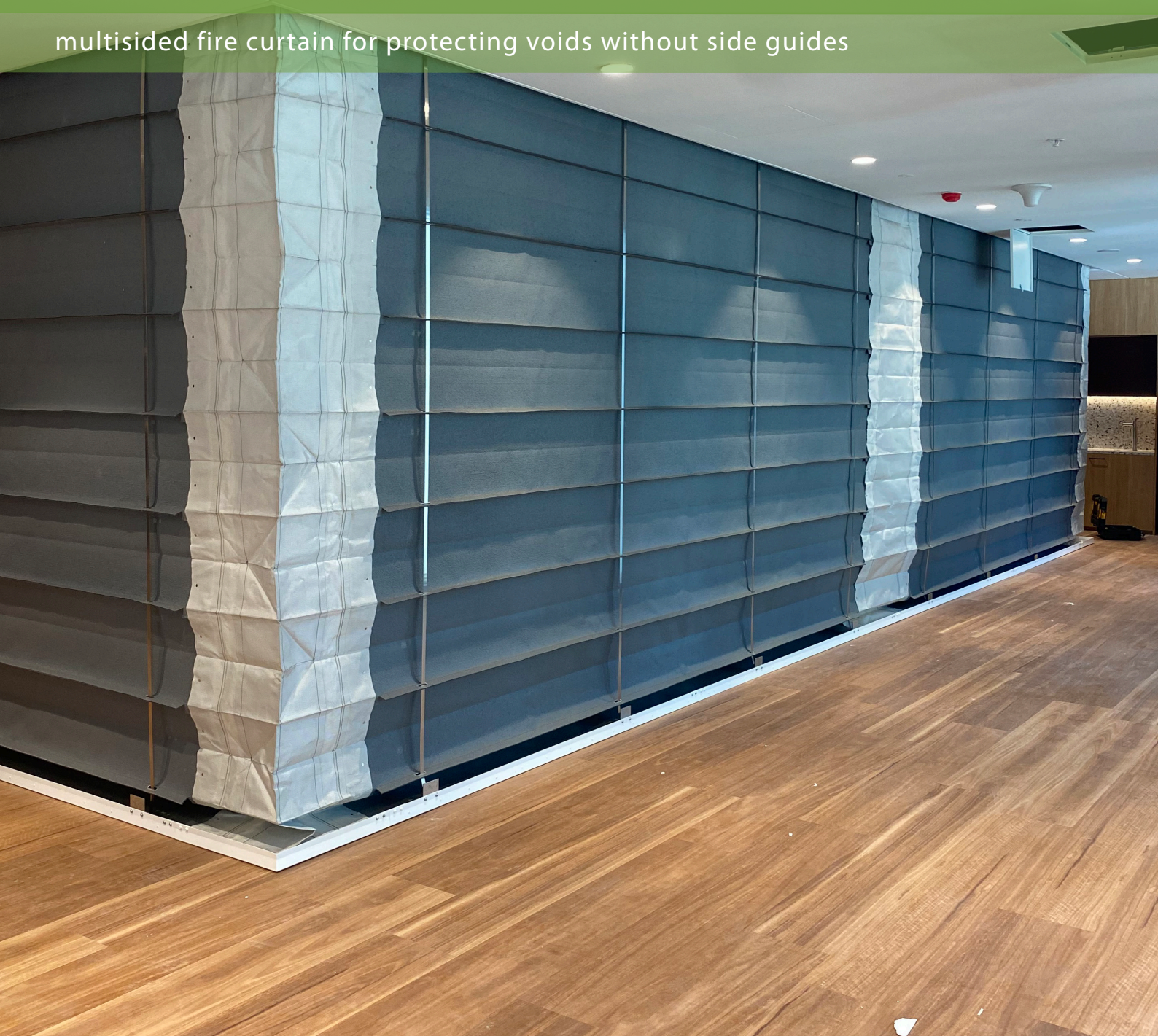


FireMaster® Plus Concertina™

multisided fire curtain for protecting voids without side guides



delivering engineered solutions

FireMaster® Plus Concertina™

multisided fire curtain for protecting voids without side guides

FireMaster® Plus Concertina™ would be used in preference to the standard FireMaster® Concertina™ where an insulated barrier is preferred or required. The unique Plus fabric provides significantly lower irradiance (approximately 4 times less) through the fire curtain barrier and is a preferred option in areas where there is expected to be egress or combustibles in close proximity to the fire curtain location.

Fire Rating	Max Width	Max Height
- / 120 / -	unlimited	4.5 metres

operation

FireMaster® Concertina™ will remain retracted within its head box until it is automatically activated by the fire alarm signal. Once activated it will completely close the opening, creating a fire and smoke compartment. Deployment is by gravity at a controlled speed of 0.06 - 0.1m/s. The only true gravity failsafe product on the market.

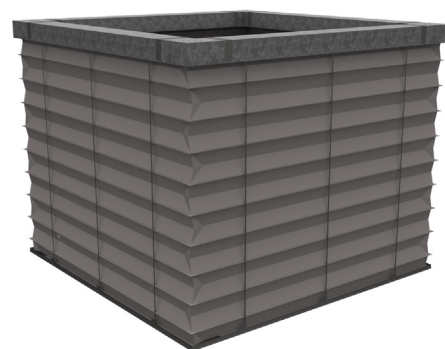
Testing is performed by a simple key switch. It is reset manually by pressing a reset button on the control panel. Automatic reset is available.

fire curtain construction

Concertina™ is a folding fabric fire curtain where the complete construction is concealed in the headbox in the ceiling. The headbox traverses the perimeter of the void in a uniform design.

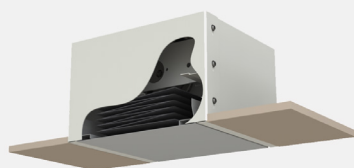
The fabric is constructed in strips forming a pleated design. These are stitched together horizontally. The material keeps the memory of the folds as manufactured. Each corner is specifically cut, folded and constructed to create any angle from 60° to 180°. As the bottom tray deploys, these pleats unfold. During retraction of the curtain the pleats will neatly fold back to their stored position.

unlimited design potential

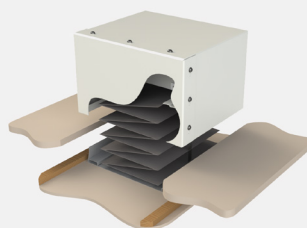


fire curtain concealment

Standard bottom tray is 300mm wide and provides complete access into the headbox when deployed. A slim line version is available with a 170mm wide bottom tray.



flush fit



suspended ceiling with SLAT
(self levelling access trim) for

FireMaster® Plus Concertina™

multisided fire curtain for protecting voids without side guides

fire rating

Full scale and full assembly fire testing to AS1530.4 providing fire integrity of 2 hours. The radiant heat is less than 4.22 kW/m² @ 500mm for 30 minutes.

Testing also includes motor testing and proving 12 operating cycles across 30 minutes fire exposure.

No need to fire protect the headbox or side guides as the complete product is fire rated.



material finish

Metalwork is zinc coated mild steel. This can be painted on site or powder coated to DULUX or RAL colours.

side guides (open shapes only)

With open shapes it's also possible to install the Concertina™ to work with traditional side retention systems whereby the barrier is fixed to the building and can be either surface mounted or recessed into the wall structure to give a flush finish.



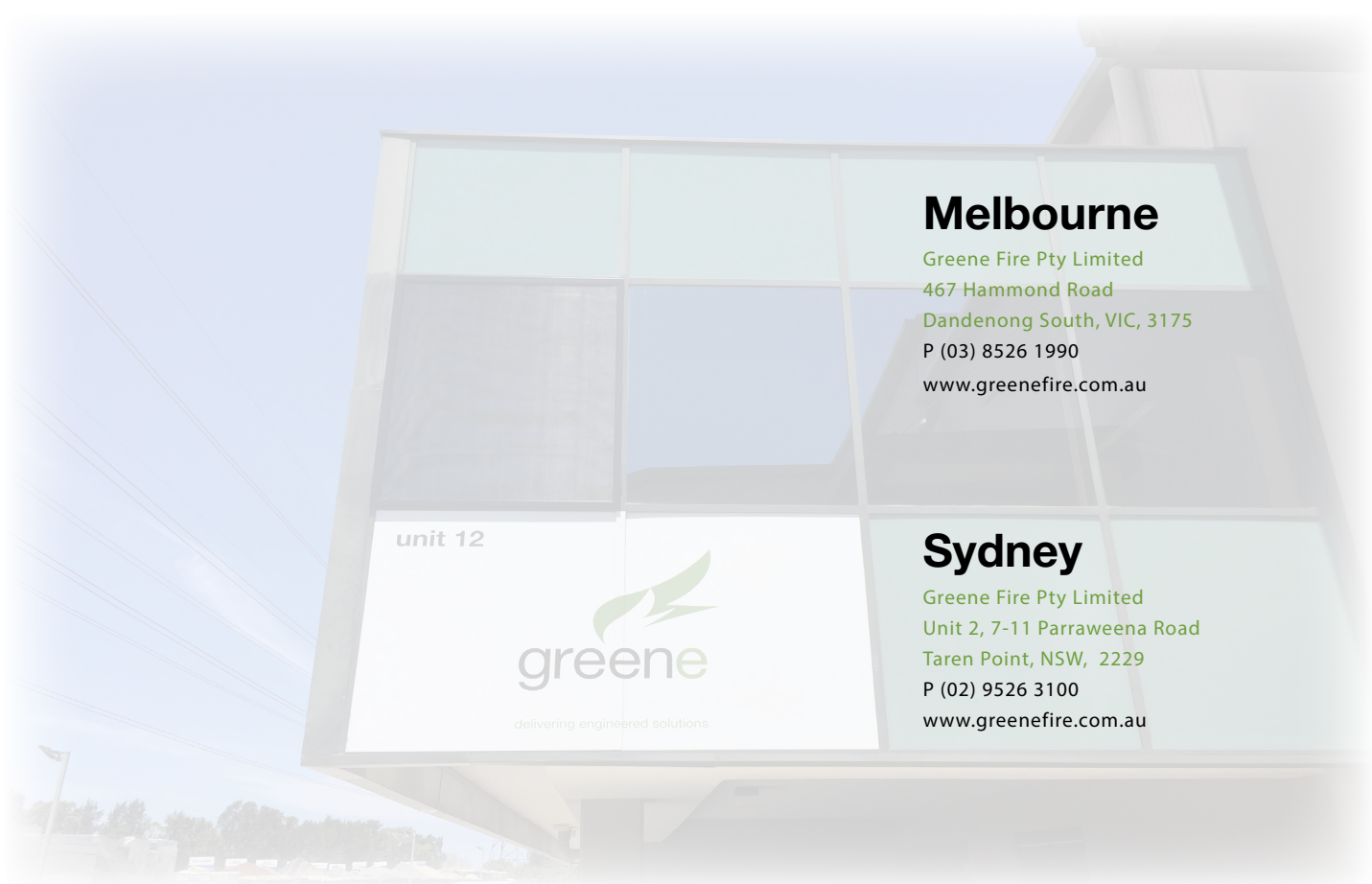
benefits

- Does not require any visible support posts at the corners.
- Tested to AS1530.4.
- Ideal for use in unsprinklered buildings or to protect near combustibles such as in museums and galleries.
- Can be installed as a polygon, triangle, 'L' shaped right angles, curves, 'Z' shapes or even in a complete circle. Almost any other shape you may desire.
- Low radiant heat performance to the majority of the fire barrier
- Total Gravity Fail Safe.





delivering engineered solutions



Melbourne

Greene Fire Pty Limited
467 Hammond Road
Dandenong South, VIC, 3175
P (03) 8526 1990
www.greenefire.com.au

unit 12



delivering engineered solutions

Sydney

Greene Fire Pty Limited
Unit 2, 7-11 Parraweena Road
Taren Point, NSW, 2229
P (02) 9526 3100
www.greenefire.com.au



FIRE PROTECTION INDUSTRY AWARDS
2019 WINNER
HARRY MARRYATT FIRE PROTECTION
COMPANY OF THE YEAR AWARD
1-49 EMPLOYEES