

# DATA SHEET GREEN DOME EXIT BUTTON (ERB-DOME)

PRODUCT CODE: 29181

UNICLASS: L4231

EPIC: D25

VERSION: Issue C – July 2018

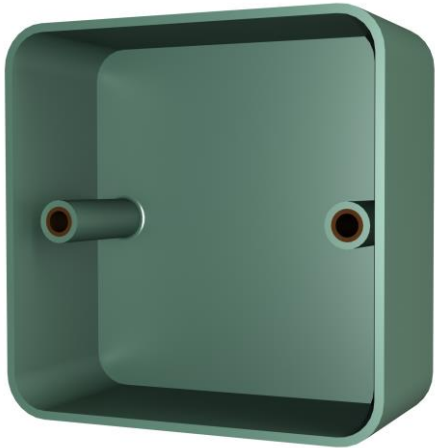


# GREEN DOME EXIT BUTTON

## KEY FEATURES

- Compliant to BS 8524:2013.
- Can be used with standard recessed single gang back box or surface mounted.
- Allen Key type secure screw.

## SURFACE MOUNT OPTION



Cable entry on rear and all sides of product.

### Back box dimensions

90mm(H) x 90mm(W) x 26mm(D)

## SPECIFICATION

### Input Voltage

24V AC/DC

### Current Rating

Maximum 4A

### Material

Stainless Steel Plate

### Colour

Green (Button & Back box)

### Operating Temperature

-20°C to 65°C (Internal Use)

### Dimensions

85mm(H) x 85mm(W) x 41mm(D)

### Weight

240g

### IP Rating

IP 66

### Location

Internal



Coopers Fire Ltd,  
Edward House, Penner Road,  
Havant, Hampshire, PO9 1QZ  
United Kingdom

Phone: +44 (0)2392 454 405

Fax: +44 (0)2392 492 732

Email: [info@coopersfire.com](mailto:info@coopersfire.com)

Web: [www.coopersfire.com](http://www.coopersfire.com)

Coopers Fire Ltd has  
a policy of continuous  
product improvement.

As such we reserve the  
right to change design  
and specifications  
without prior notice.

Please check our website  
for the latest information