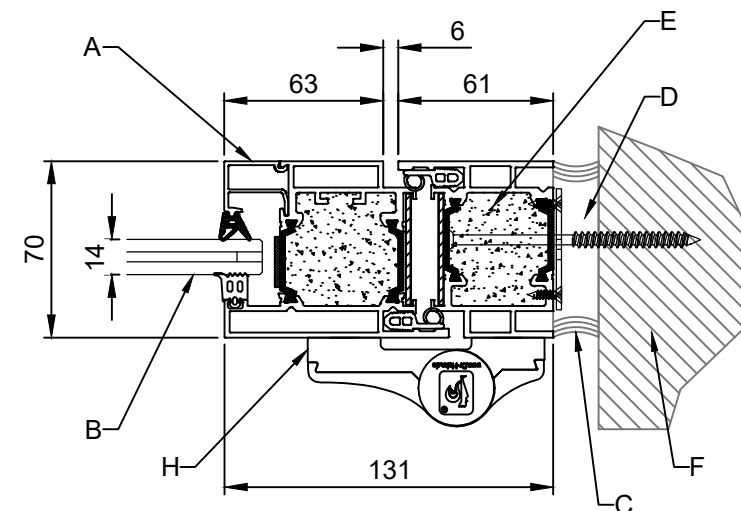


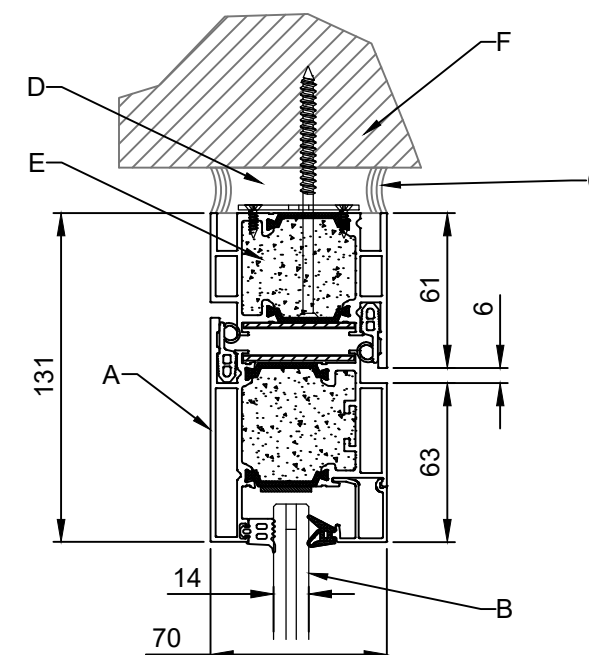
SINGLE DOOR
DOUBLE DOORS
FRL -/60/45

ALUFLAM
AF70
VETROTECH
CONTRAFLAM LITE 60
TOTAL THICKNESS: 14mm
MAX DOOR SIZE:
1200mm(W) X 2500mm(H)

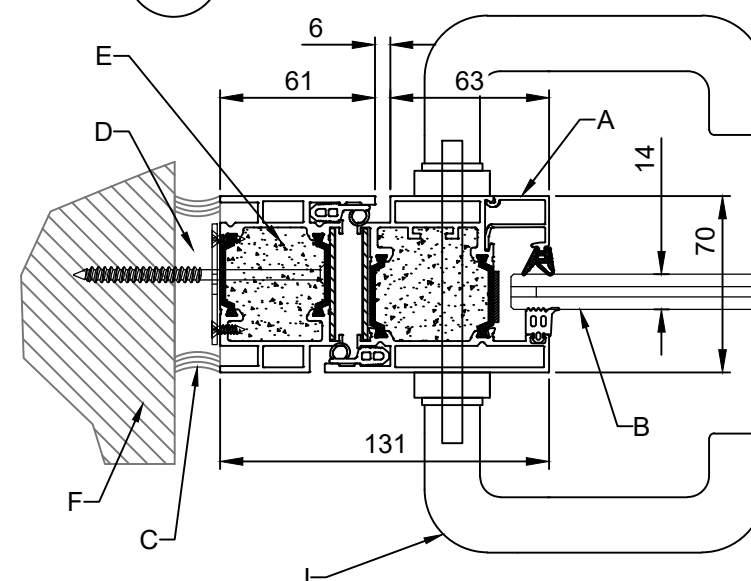
| | |
|---|---|
| A | ALUFLAM AF70 FRAME |
| B | CONTRAFLAM LITE 60 FIRE-RATED GLASS (14mm THICK) |
| C | FIRE-RATED CAULKING/ SILICONE |
| D | MINERAL WOOL |
| E | FACTORY FILLED ALUFLAM FIRE-RATED CONCRETE CORE |
| F | 120/120/120 FIRE-RATED WALL OF CONCRETE / PLASTERBOARD |
| G | CONCRETE SLAB |
| H | 3 OFF HINGES |
| I | LOCKSET |



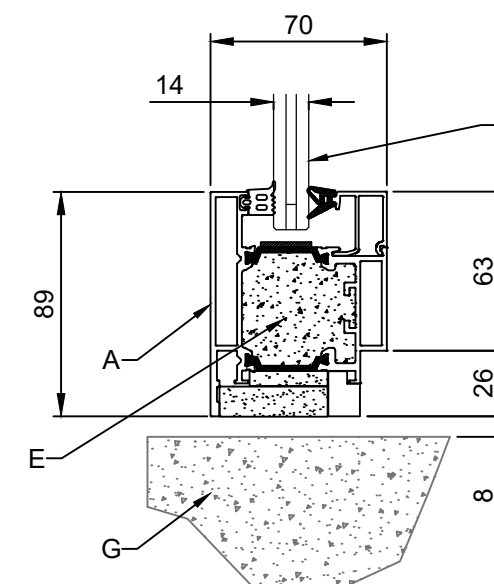
1 PIVOT JAMB SECTION



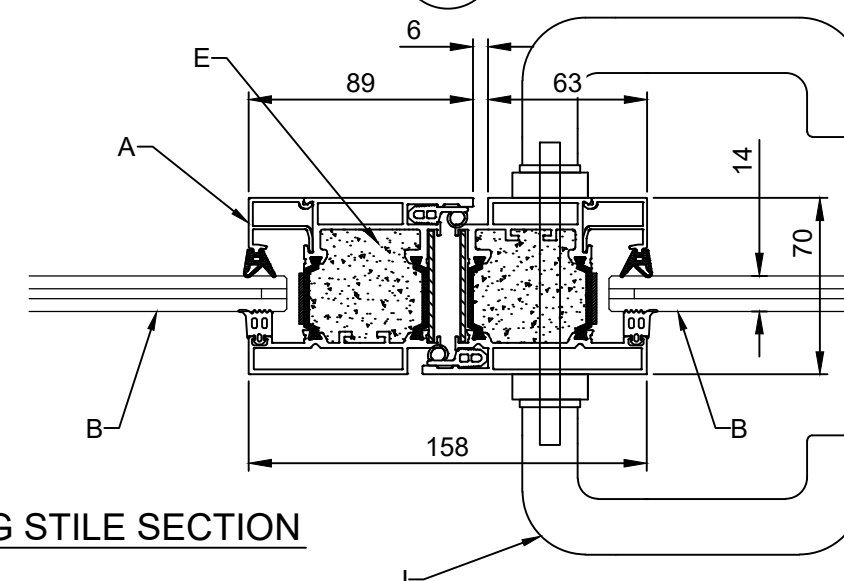
3 DOOR HEADER SECTION



2 LOCKING JAMB SECTION



4 BOTTOM DOOR RAIL SECTION



5 MEETING STILE SECTION

NOTE - SIZES OUTSIDE THESE STANDARDS - PLEASE CONTACT GREENE FIRE



Unit 12, 7-11 Parraweena Road,
Taren Point NSW 2229

Tel: (02) 9526 3100
Fax: (02) 9526 3111

Email: info@greenefire.com.au
Web: www.greenefire.com.au

| | | |
|------------------|---|---|
| DRAWN: JC | TITLE: AF70 - DOORS - CONTRAFLAM LITE 60 | |
| CHECKED: CGE | ALL RIGHTS RESERVED. THIS DESIGN MAY NOT BE REPRODUCED IN ANY MATERIAL FORM, INCLUDING ELECTRONICALLY WITHOUT THE WRITTEN PERMISSION OF THE COPYRIGHT NAMES | ALL DIMENSION IN MILLIMETERS UNLESS OTHERWISE STATED |
| APPROVED: CGE | DRAWING NO: AF70D-CFL60-01 | ISSUE: A DATE: 16.11.2018 |