

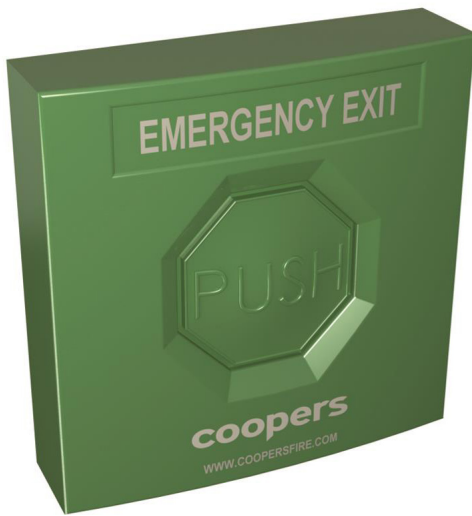


optional extras
www.greenefire.com.au

emergency egress - optional extras



standard emergency retract button



The standard emergency retract button is a simple solution made of polycarbonate / ABS plastic. This system is vandal resistant and can be used with standard recessed single gang back box. simply press the button and the curtain will raise for a predetermined amount of time, after this time it will lower sealing the opening.

green dome retract button



This is an easy to use emergency egress button which is fixed on a stainless steel plate. It can be used with standard recessed single gang box or surface mounted. simply press the button and the curtain will raise for a predetermined amount of time, after this time it will lower sealing the opening.

touch sensitive retract button



This touch sensitive emergency retract button allows for easier operation of fire curtains when they are deployed. This system features touch sensitive operation, stainless steel touch plate, concealed fixings, twin LED status indicators and a die cast aluminium body.

stainless steel egress button



Our stainless steel egress button, is used to operate a curtain once it is deployed. This allows egress after deployment ensuring safe escape. simply press the button and the curtain will raise for a predetermined amount of time, after this time it will lower sealing the opening.

control systems - optional extras



zone control panel remote



The Zone Control Panel Remote (ZCP-R) is an optional test station that can be used with the BBU (Battery BackUp Unit) and ERU (Emergency Retract Unit) systems. The ZCP-R provides LED indication of the status of the power supply and of the alarm. The ZCP-R also includes a key switch and reset button for localised testing of the associated curtain(s) controlled by the BBU / ERU.

MK5 Control Panel



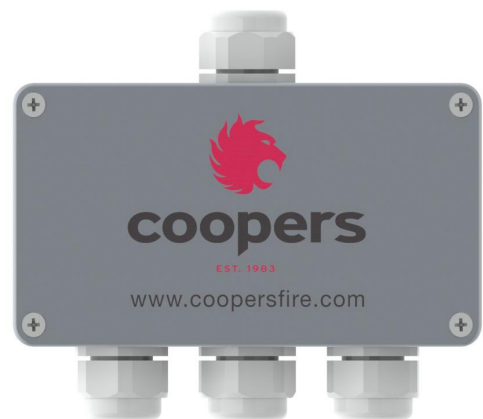
The MK5 system uses Smoke / Fire Curtains with 24Vdc permanent magnet electrical motor fitted with an internal 24Vdc electromagnetic brake, as standard. When the Smoke / Fire curtain(s) are fully retracted, the internal electromagnetic brake is powered, keeping the Smoke / Fire curtain in its retracted position.

variospeed battery backup



The Variospeed®6 BBU-CG system is used for Smoke / Fire Curtain(s) fitted with 24Vdc permanent magnet electrical motors fitted with an internal 24Vdc electromagnetic brake, as standard. When the Smoke / Fire curtain(s) are fully retracted, the internal electromagnetic brake is powered, keeping the Smoke / Fire curtain(s) in their retracted position.

MK5 BMS interface



The MK5 BMS Interface can be connected to the MK5 Fire/Smoke curtain control unit and provide volt-free contact outputs to signal the status of the control system and associated Fire/Smoke curtain.

warning systems - optional extras

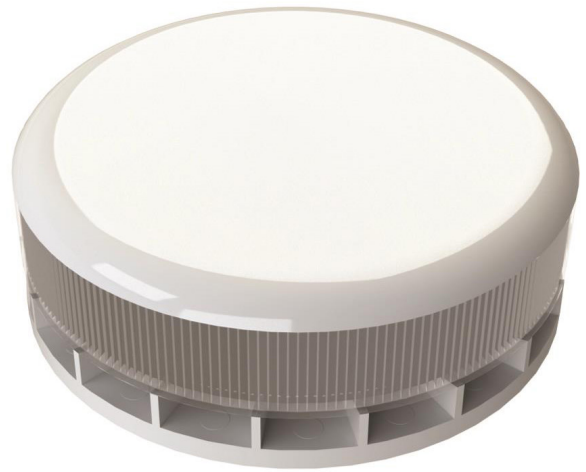


optical smoke & heat detector



The Series 65 Optical Smoke Detector (OSD) and heat detector (HD) has a moulded self-extinguishing white polycarbonate case. The OSD chamber houses an infrared light emitting diode (LED) and a photo-diode. If light is scattered onto the photo-diode due to the presence of smoke – the detector switches the alarm on. The HD monitors air temperature electronically and is initiated if the ratio exceeds the factory pre-set level.

light and sound warning unit



The Light and Sound Warning Unit (LSW) is designed for audible and visual signalling. The unit is able to provide 4 tone options, making it suitable for use in numerous countries. The sound level can be adjusted if required via an onboard potentiometer.

light warning unit



The Light Warning – (LWC) is designed for visual signalling. It can be supplied with a mounting base for installation purposes. Please Note: This product has a flash rate of 0.8Hz, below the recommended safe maximum rate of 4Hz as recommended under the HSE (Health and Safety Executive).

voice warning unit



The Voice Warning offers two standard programmed messages. Message One: “Caution, fire curtain descending”. Message Two: “Warning, please remove obstruction”. Other / custom messages are available at request

obstruction sensors - optional extras



vertical obstruction warning



The Obstruction Warning System monitors the opening protected by the fire curtain to ensure it is kept clear from obstruction. If the detection zone is obstructed, a warning device will be activated after 5 minutes. The time period can be adjusted if required.

obstruction light curtain



The Obstruction Light Curtain monitors the opening protected by a fire curtain to ensure the opening is kept clear. If the opening is obstructed then the infrared beam is broken. After a delay a warning device will be activated.

obstruction warning system



The Obstruction Warning System monitors the opening protected by a fire curtain to ensure the opening is kept clear. If the opening is obstructed then the infrared beam is broken. After a short delay a warning device will be activated.

horizontal obstruction warning



The Obstruction Warning System monitors the horizontal opening protected by a fire curtain to ensure it is kept clear. If the opening is obstructed the LED beam will be broken. After a short delay period a warning device will be activated. The warning device can be audible and/or visual.

other - optional extras



test reset switch



The Test Reset Switch (TRS) can be used with all Battery Back-Up Unit (BBU) and Emergency Retract Unit (ERU). It is a robust alternative to the ZCP-R and provides a key switch and reset button for localised testing of the associated curtain(s) controlled by the BBU / ERU. The TRS can be flush or surface mounted and Multiple TRS can be used with each BBU / ERU.

standard key switch



The Coopers Fire Standard Key Switch can be used on Variospeed®6 or MK5 control systems. It can be used as a remote means of testing the Fire/Smoke curtains. The Standard Key Switch can also be used to reset stand-alone smoke/heat detectors when connected to the Variospeed®6 control system.

ResQ-Window vision panel



The ResQ-Window™ is a patented translucent fire proof flexible material that can be installed into a fire curtain. This allows building occupants and first respondents to see through the curtain after it has been deployed. This allows for building occupants to be aware of where the fire is located allowing them to escape in a safe manner.

we provide CPD training!



understanding fire resistant glazing

We at Greene Fire have recently introduced Australia's first aluminium framed fire resistant glazing solution. This educational training session will focus on helping you to develop knowledge and skills surrounding fire resistant glazing and our fire resistant aluminium framing. This presentation will cover why we need fire resistant glazing (with a focus on understanding the Australian Standards), What types of glazing is available on the market, benefits of various framing materials, and the benefits of utilising aluminium framing.



active smoke barriers

This comprehensive, educational seminar provides delegates, with an informative account of smoke curtain barriers, their applications and the integral role they play when installed within the build environment in conjunction with a Smoke, Heat, Exhaust and Ventilation (SHEVS) systems. Written to provide regulators and the design community and other professional bodies with a greater understanding of the governing standards and regulatory compliance

understand bushfire protection and AS 3959-2018

With the recent release of AS3959-2018, many changes have occurred causing formerly compliant fire safety systems to become obsolete and non-compliant. This new standard has led to more aggressive testing of products which has greatly reduced the variety of bushfire safety systems on the market. This CPD presentation will help you better understand these changes and will introduce you to some of the key solutions that are available on the market.

fire curtain barrier assemblies: non-invasive fire protection

A comprehensive, educational seminar designed to provide Architects, Building Controllers control bodies and Fire Professionals with a greater understanding of fire curtain barriers and the governing standards that regulate their use. From compartmentation to protecting a means of escape, this educational seminar will illustrate when and where fire curtain barriers can be specified within the build environment. A review of a fire barriers' operation, installation and continuous servicing requirements will provide delegates with the opportunity to ask pressing and topical questions.





delivering engineered solutions

Melbourne

Greene Fire Pty Limited
123 Woodlands Drive
Woodlands Industrial Estate
Braeside, VIC, 3195
P (03) 8526 1990
www.greenefire.com.au
ABN: 50 122 435 081

unit 12



Sydney

Greene Fire Pty Limited
Unit 2, 7-11 Parraweena Road
Taren Point, NSW 2229
P (02) 9526 3100
www.greenefire.com.au
ABN: 50 122 435 081



INNI V A T E

