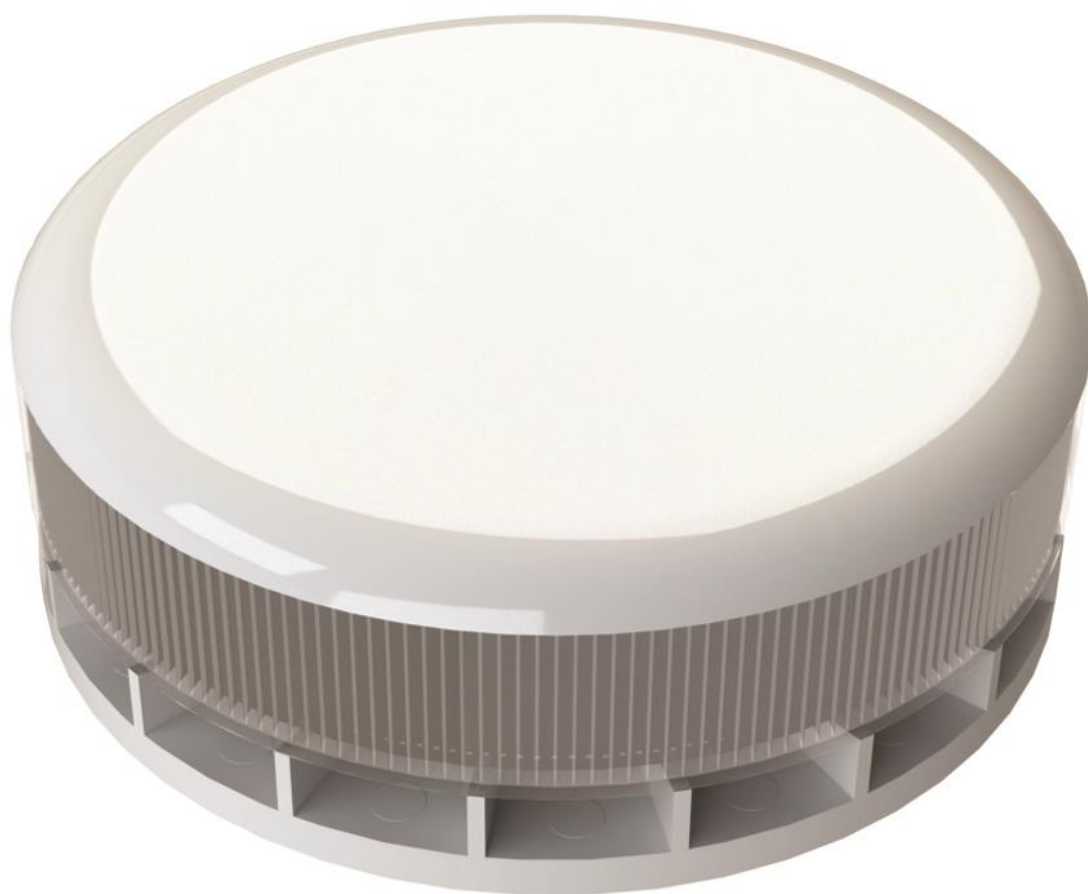


# DATA SHEET

## LIGHT & SOUND WARNING UNIT (LSW)

PRODUCT CODE: 31022

VERSION: Issue F – July 2018



# LIGHT & SOUND WARNING UNIT (LSW)

## PRODUCT DESCRIPTION

The Light and Sound Warning Unit (LSW) is designed for audible and visual signalling.

The unit is able to provide 4 tone options, making it suitable for use in numerous countries. The sound level can be adjusted if required via an onboard potentiometer.

## SPECIFICATION

### Input Voltage

24 – 30VDC

### Current Consumption

Maximum 6mA

### Material

94V0 rated ABS

### Body Colour

White

### Lens Colour

Clear (Red output)

### Operating Temperature

-10°C to 55°C

### Dimensions

100mm (D) x 36mm (H)

### Weight

144g

### IP Rating

IP21C

### Location

Internal



Coopers Fire Ltd,  
Edward House, Penner Road,  
Havant, Hampshire, PO9 1QZ  
United Kingdom

**Phone:** +44 (0)2392 454 405

**Fax:** +44 (0)2392 492 732

**Email:** [info@coopersfire.com](mailto:info@coopersfire.com)

**Web:** [www.coopersfire.com](http://www.coopersfire.com)

Coopers Fire Ltd has  
a policy of continuous  
product improvement.

As such we reserve the  
right to change design  
and specifications  
without prior notice.

Please check our website  
for the latest information