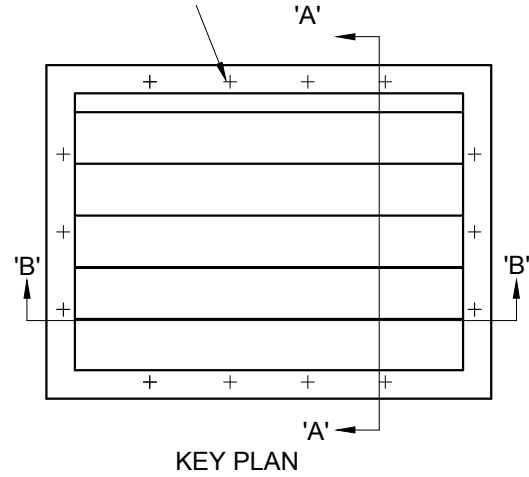
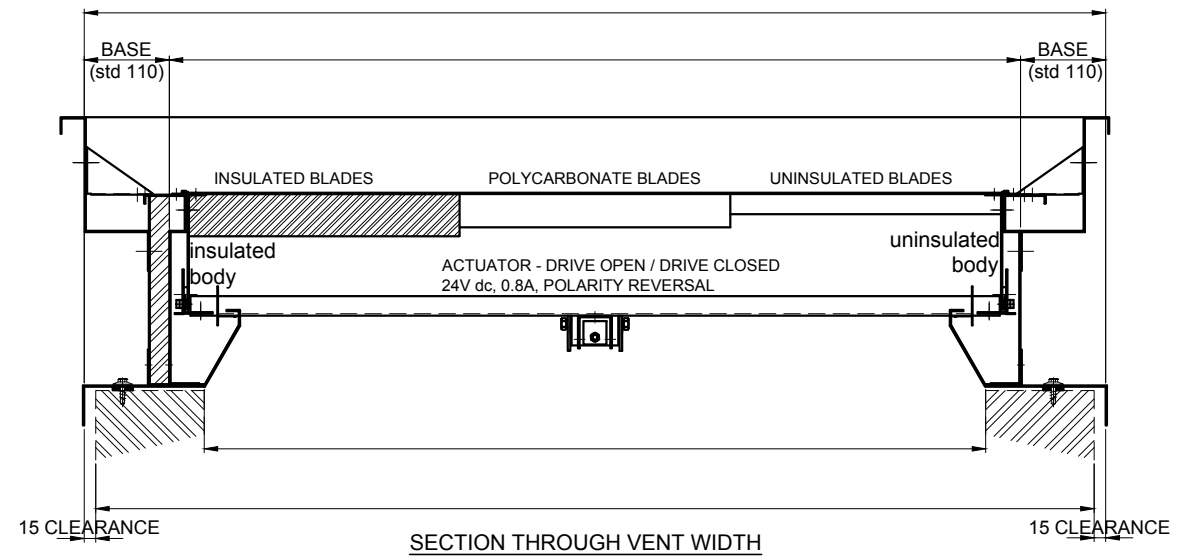
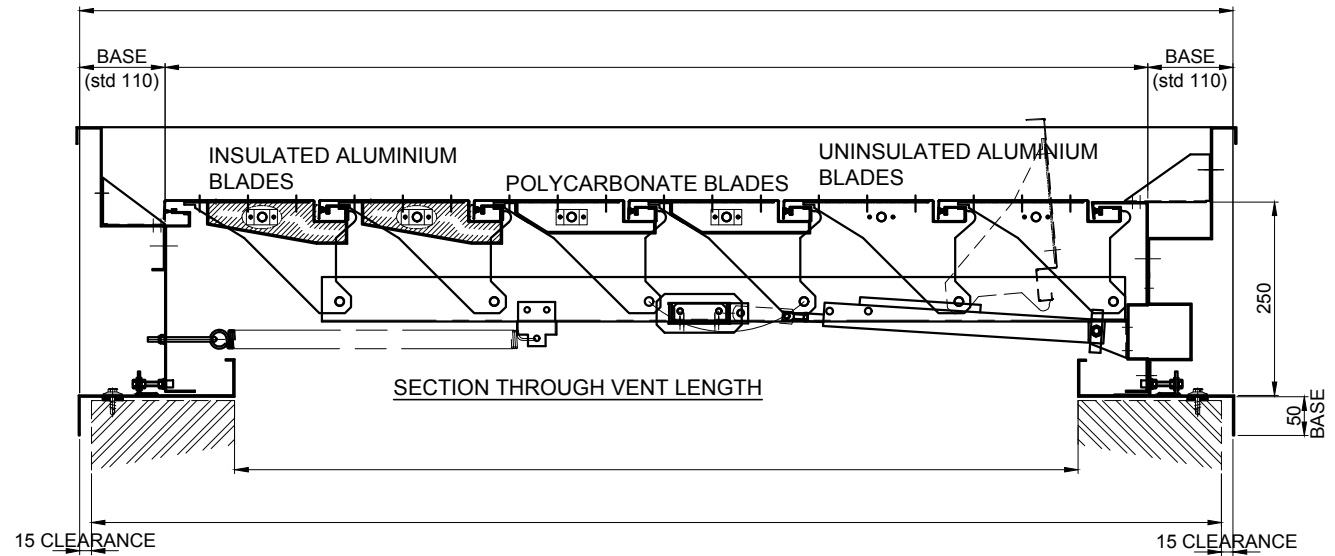


PLACE VENT BASE ON TO
CONTINUOUS MASTIC BEAD
& FIX WITH BUILDEX N°12 x 25
LONG STITCHING SCREWS
@ APPROX 300 CENTRES



FOR ANY SLOPE ON UPSTAND, HEAD MUST BE
POSITIONED UPSLOPE, OPERATION AT HEAD



ITEM	PART NUMBER	DESCRIPTION	QTY	MATERIAL GAUGE AND SPEC
1.	-	-	-	-

POWRMATIC LTD

Powrmatic Ltd. Hortbridge, Ilminster. Somerset. TA19 9PS.
Tel: 01460 53535 Fax: 01460 52341
Web: www.powrmatic.co.uk E-mail: r&d@powrmatic.co.uk

This drawing is copyright and the property of POWRMATIC LIMITED. It must not be used without their knowledge, nor communicated to any other person or company.

APPROVED BY:				TITLE:	
				MM PROJECTION: UNITS:	
UNSPEC. TOLS. Hole centers ±0.25mm General ±0.5mm Finished sizes ±1.0mm				DRG NO.:	
DRN	I/A No	DCR	DATE	ISSUE	DO NOT SCALE
NEW DRAWING					